

### Quiz 1

1a)  $-8 < x < -2$

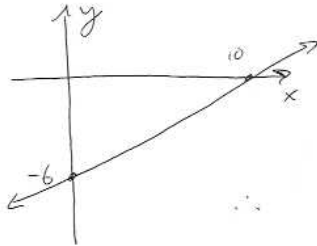
1b)  $(-8, -2)$

1c)



2) x:  $(10, 0)$

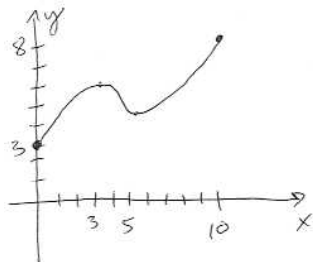
y:  $(0, -6)$



### Quiz 2

1)  $y = -\frac{2}{3}x + 6$

2)



### Quiz 3

$r = 227$  meters

### Quiz 4

1) 74.2 cm

2) 45.8 inches

### Quiz 5

1)  $-1 \leq \cos(\theta) \leq 1$

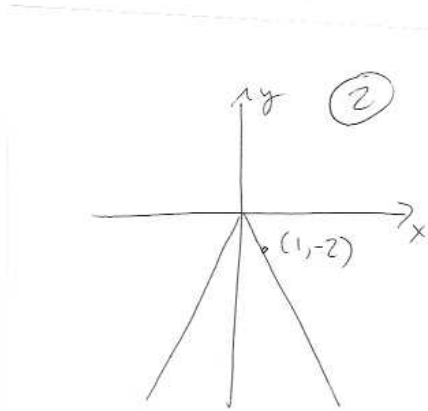
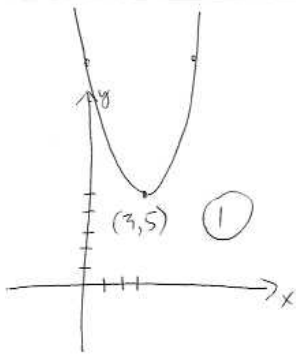
2) All  $\theta$  except  $0, \pm 180^\circ, \pm 360^\circ, \dots$

3)  $\sin(270^\circ) = -1$                        $\csc(270^\circ) = -1$   
 $\cos(270^\circ) = 0$                                $\sec(270^\circ)$  is undefined  
 $\tan(270^\circ)$  is undefined                   $\cot(270^\circ) = 0$

4) sine, cosecant are positive; cosine, tangent, cotangent, secant are negative

5)  $\sin(\alpha) = \pm \frac{\sqrt{15}}{4}$

### Quiz 6

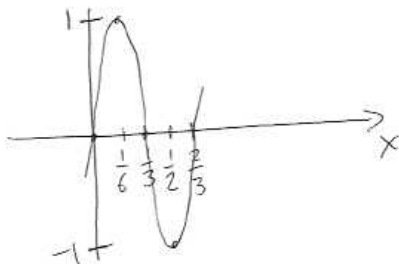


### Quiz 7

There are 83 small biscuits and 15 large biscuits.

### Quiz 8

1)



2)  $y = 11 + 4 \cos(x)$

### Quiz 9

- 1) 0.419 seconds
- 2) 2.39 wags per second
- 3) 16 cm
- 4) 76 cm/s

### Quiz 10

- 1)  $g(x) = (x - 2)^2$
- 2) domain is  $[0, \infty)$ , range is  $[2, \infty)$
- 3) domain is  $[2, \infty)$ , range is  $[0, \infty)$
- 4)  $f(9) = 5$ ,  $g(5) = 9$
- 5)  $g(10) = 64$ ,  $f(64) = 10$

### Quiz 11

- a) 26.7 cm
- b) 14.7 cm